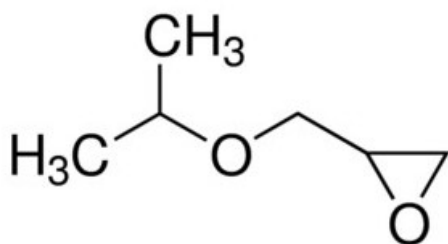


Glycidyl isopropyl ether, 98%

Glycidyl isopropyl ether, 98%

Identificativi Prodotto

Reference: 291463-250ML



Descrizione

Dati Tecnici

CAS Number: 4016-14-2

Molecular Formula: C₆H₁₂O₂

Purity Grade: 98%

Molecular Weight: 116.16

Shipped on ICE/no ICE: STD

SAP Pack with Pack Qty: 1X250ML