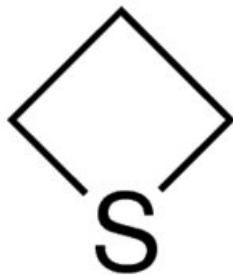


Trimethylene sulfide, $\geq 96.0\%$ (GC)

Trimethylene sulfide, $\geq 96.0\%$ (GC)

Identificativi Prodotto

Reference: 92458-10ML



Descrizione

Dati Tecnici

CAS Number: 287-27-4

Molecular Formula: C₃H₆S

Purity Grade: $\geq 96.0\%$ (GC)

Molecular Weight: 74.14

Shipped on ICE/no ICE: STD

SAP Pack with Pack Qty: 1X10ML