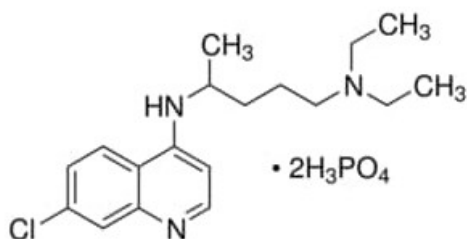


# Chloroquine diphosphate salt, powder or crystals, 98.5-101.0% (EP)

Chloroquine diphosphate salt, powder or crystals, 98.5-101.0% (EP)

## Identificativi Prodotto

Reference: C6628-250G



## Descrizione

## Dati Tecnici

CAS Number: 50-63-5

Molecular Formula: C<sub>18</sub>H<sub>26</sub>ClN<sub>3</sub>

Purity Grade: powder or crystals, 98.5-101.0% (EP)

Molecular Weight: 515.86

Shipped on ICE/no ICE: STD

SAP Pack with Pack Qty: 1X250G