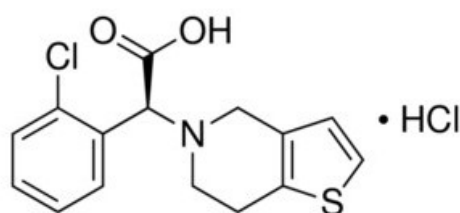


# Clopidogrel Related Compound A, Pharmaceutical Secondary Standard. Certified Reference Material

Clopidogrel Related Compound A,  
Pharmaceutical Secondary Standard. Certified  
Reference Material

## Identificativi Prodotto

Reference: PHR1990-40MG



## Descrizione

## Dati Tecnici

CAS Number: 144750-42-5

Molecular Formula: C<sub>15</sub>H<sub>14</sub>ClNO<sub>2</sub>S

Purity Grade: Pharmaceutical Secondary Standard; Certified Reference Material

Molecular Weight: 344.26

Shipped on ICE/no ICE: WICE

SAP Pack with Pack Qty: 1X40MG