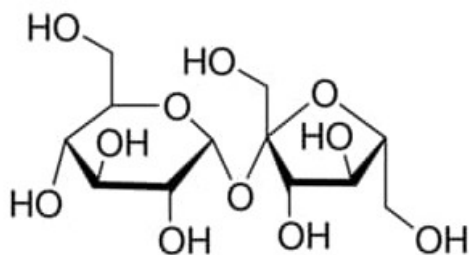


## Sucrose, Grade I, suitable for plant cell culture

Sucrose, Grade I, suitable for plant cell culture

### Identificativi Prodotto

Reference: S5390-5KG



### Descrizione

### Dati Tecnici

CAS Number: 57-50-1

Molecular Formula: C<sub>12</sub>H<sub>22</sub>O<sub>11</sub>

Purity Grade: Grade I, suitable for plant cell culture

Molecular Weight: 342.30

Shipped on ICE/no ICE: STD

SAP Pack with Pack Qty: 1X5KG