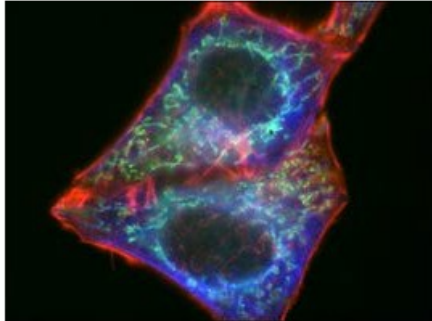


Anti-Rabbit IgG (H+L), highly cross-adsorbed, CF(TM) 488A antibody produced in goat, ~2 mg/mL, affinity isolated antibody

Anti-Rabbit IgG (H+L), highly cross-adsorbed,
CF(TM) 488A antibody produced in goat, ~2
mg/mL, affinity isolated antibody

Identificativi Prodotto

Reference: SAB4600045-250U



Descrizione

Dati Tecnici

Purity Grade: ~2 mg/mL, affinity isolated antibody
Shipped on ICE/no ICE: DICE
SAP Pack with Pack Qty: 1X250UL
Storage Temperature: -20C